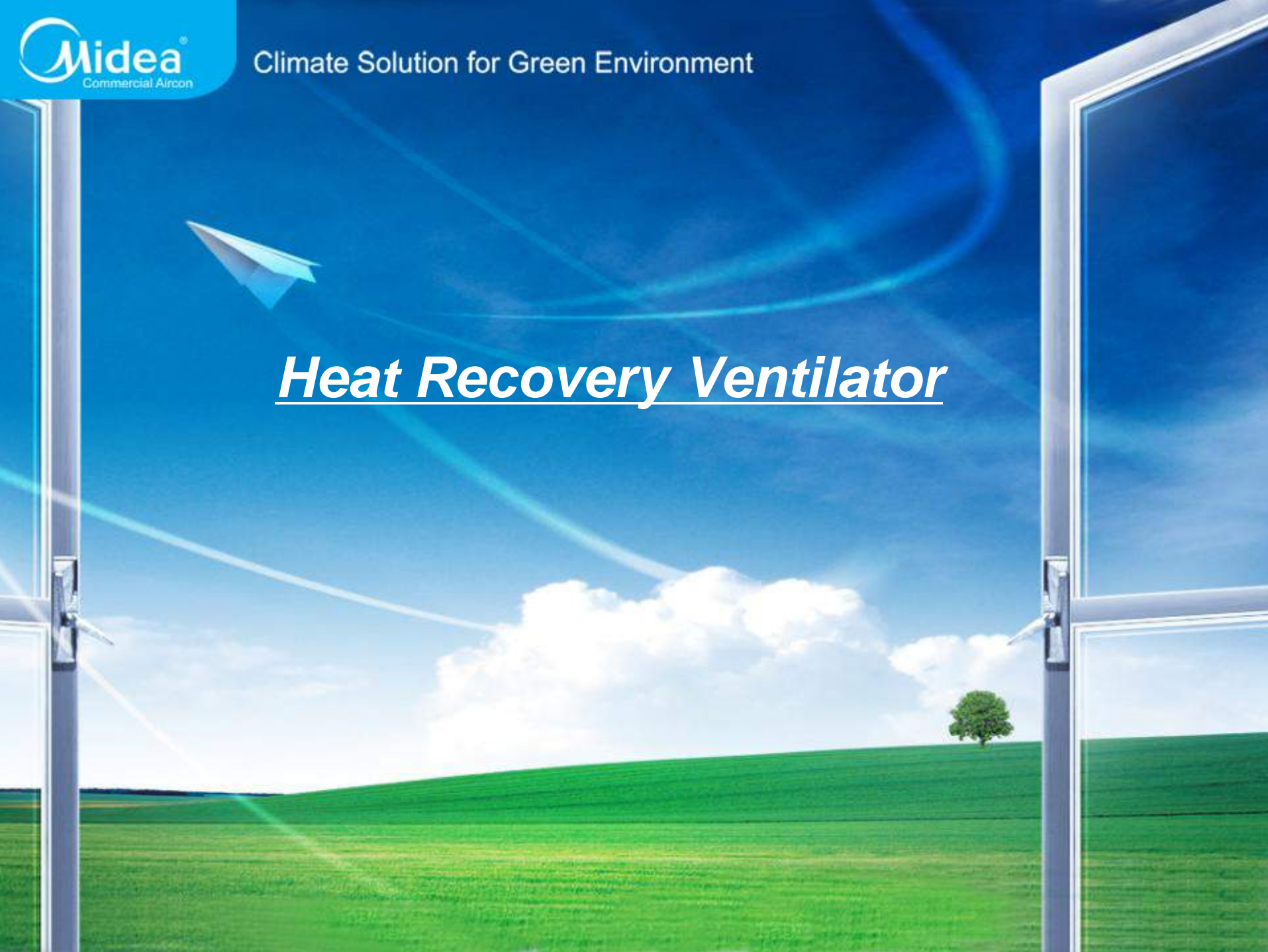
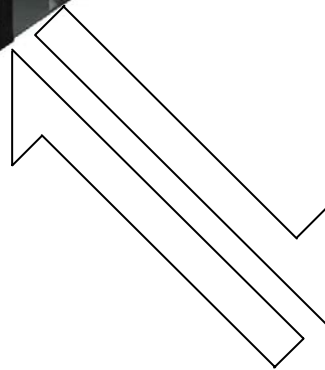


*Heat Recovery Ventilator*



*With air conditioner perfectly combination*

*To create a clear healthy environment*



- *Multi running mode*
- *High efficiency exchanger*
- *Flexible multi control ways*
- *Compact and low noises design*

➤ ***Compact and low noises design***

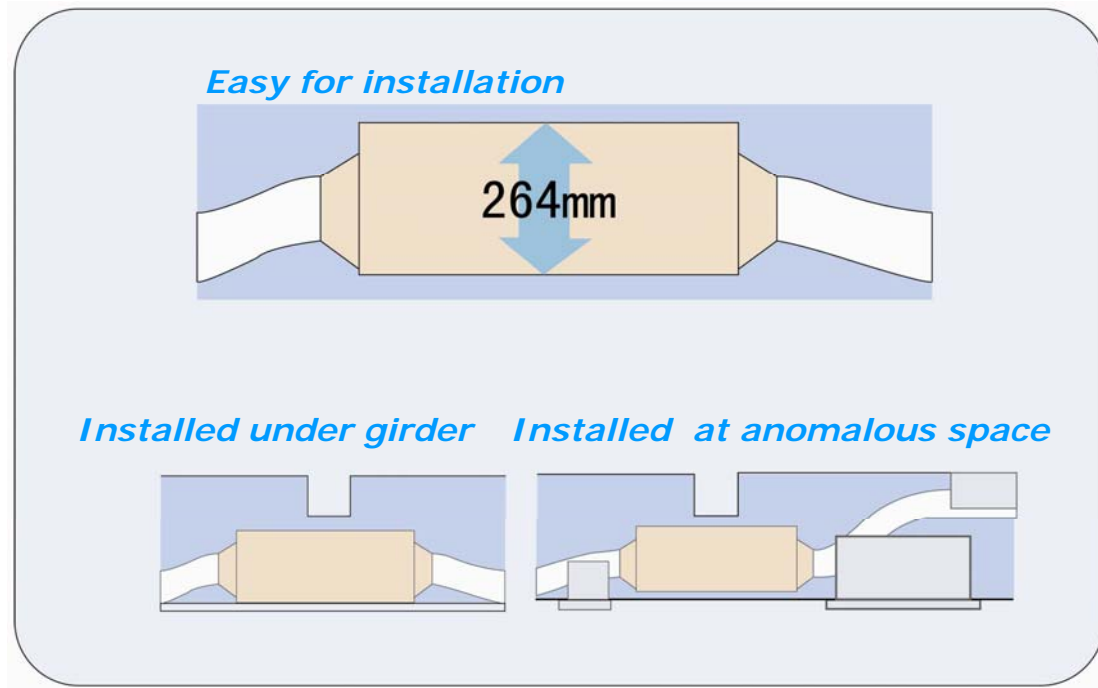
- *Adopts new high efficiency element HEP, optimized fan design.*
- *Unit volume average reduced 27.7% compare with old same air volume.*
- *Body height reduced, easy installation and maintenance.*

***Compact design***



*Model: CE-HRV-200*

- So no matter small space or anomalous space, our HRV also can easy installation  
HRV-200 only has 264mm height; HRV-300~500 only has 270mm height.

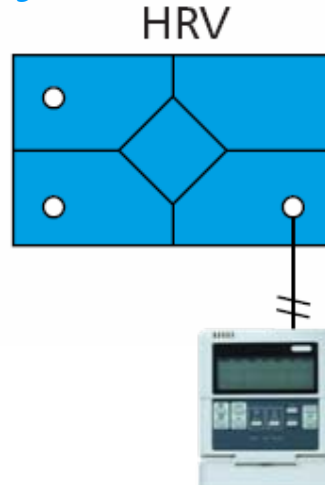


*Model: CE-HRV-200*

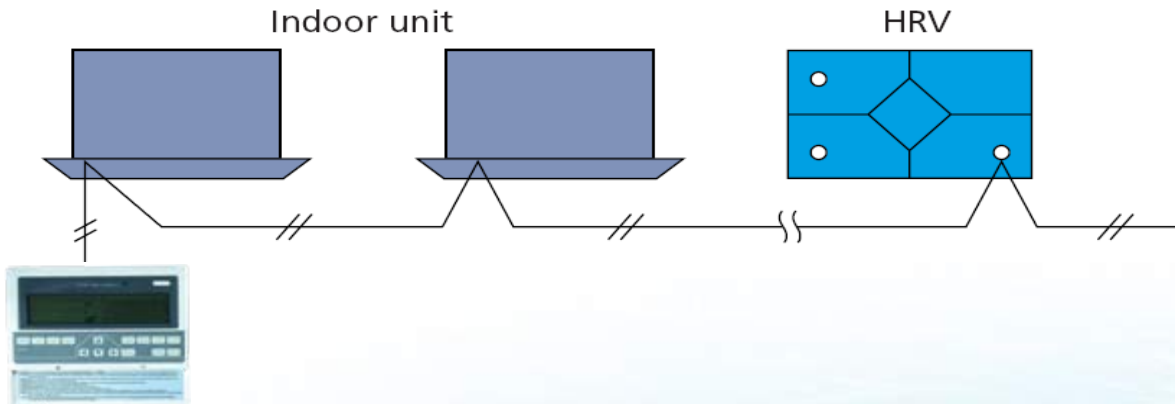
- Add sound absorption material, quiet operation

➤ **Flexible multi control ways**

- *Independent control by wired controller KJR-27B/E*



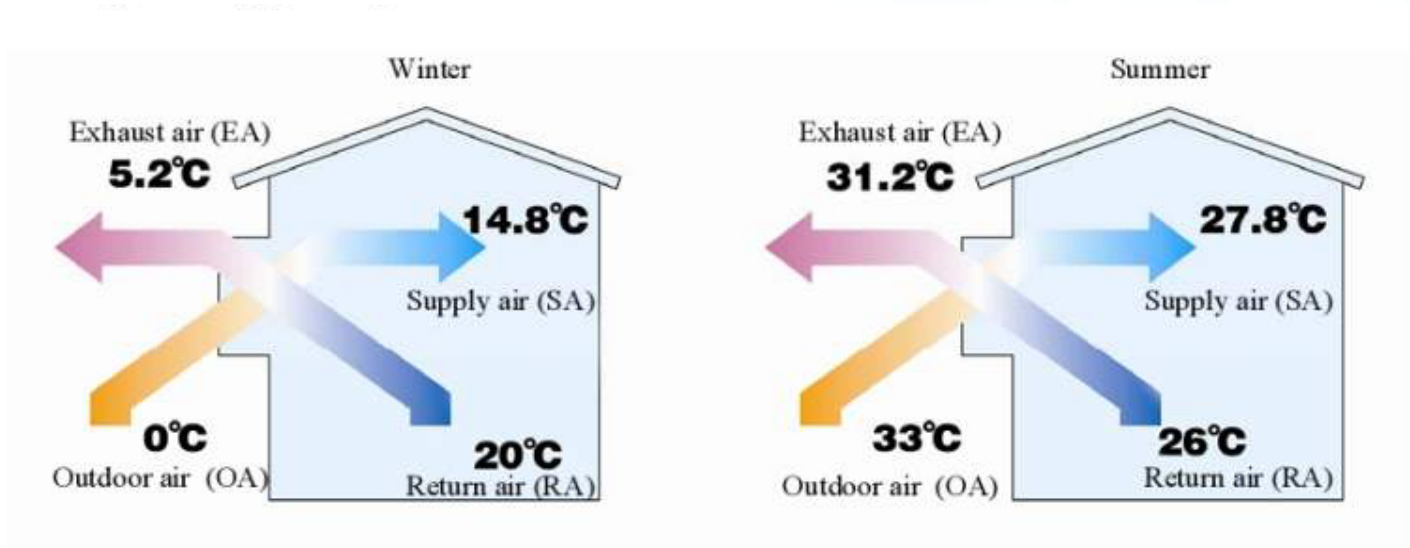
- *Central control together with MDV indoor units by CCM03*



**Optimized control solution perfectly combined with MDV**



- *High efficiency exchanger, saving more energy*
- *Energy saving principle*



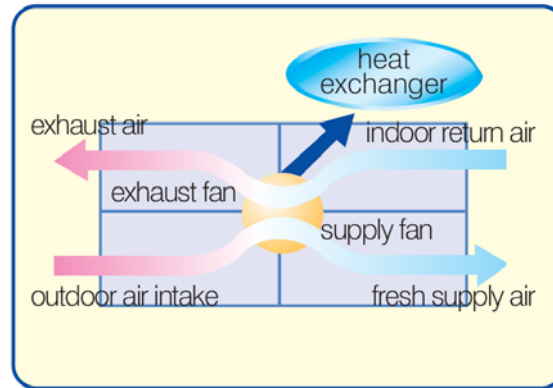
*Heat recovery calculating equation (Winter)*

*Indoor supply air temp. = (indoor air temp. – outdoor air temp.) \* temp. recover efficiency + outdoor temp.*

*Example  $14.8\text{ }^{\circ}\text{C} = (20\text{ }^{\circ}\text{C} - 0\text{ }^{\circ}\text{C}) * 74\% + 0\text{ }^{\circ}\text{C}$*

- ***Fresh air equipment of total heat exchanger***

*When exhaust air and supply air cross through the paper heat exchanger, energy exchange was happened in here; Supply fresh air simultaneity, recover part of energy which outdoor exhaust air taking*



- ***High efficiency exchanging heat***



***1. Good moisture permeability and air tightness***

***Energy exchanging efficiency up to 74%***

***2. Good anti-combustibility***

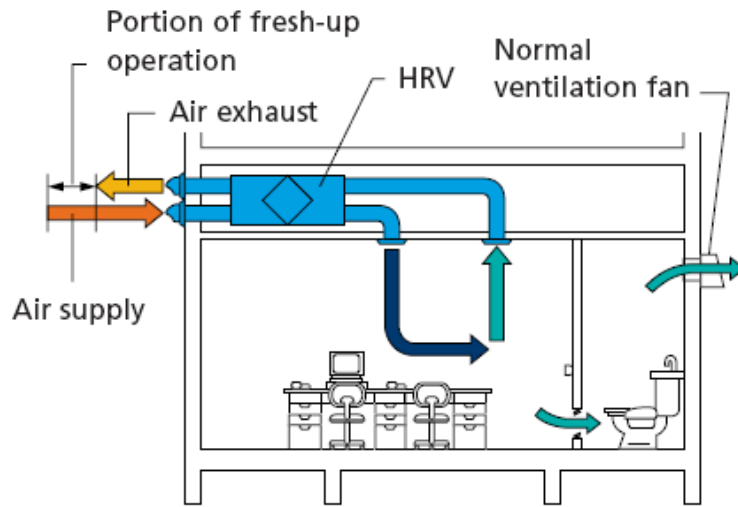
***More safety and reliability***

***3. Excellent tear resistance and aging resistance***

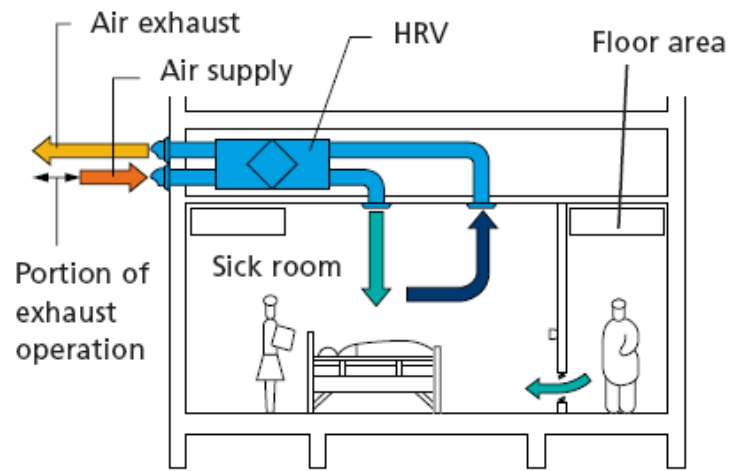
## ➤ Flexible mode for you application

Raising the air supply maintains proper room pressure to prevent back-flow of toilet/kitchen odours or moisture inflow.

Raising exhaust air decreases room pressure to prevent the leaking of odours or floating bacteria into other rooms.



eg. Office



eg. Hospital

- **Air supply mode**  
(supply air > exhaust air)

- **Exhaust mode**  
(supply air < exhaust air)



- **By pass mode (No heat exchanges)**

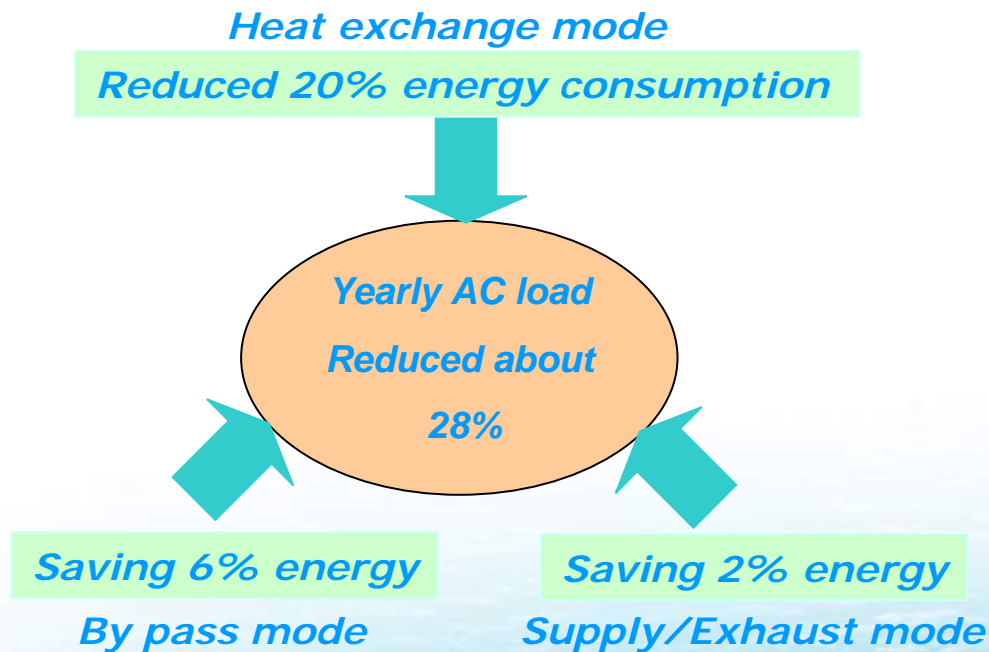
*Example: In case outdoor temperature is lower than indoor temp., we don't need heat exchange but we need fresh air*

*Remark: this mode only available 200~1000m<sup>3</sup>/h*

- **Heat exchange mode (supply air=exhaust air)**

**Thanks to different mode combined application**

**The yearly AC load reduced 28%**



## Product line-up



*Air volume range: 200m<sup>3</sup>/h ~ 1000m<sup>3</sup>/h  
220~240V, 50Hz, 1Ph*



*Air volume range: 1500m<sup>3</sup>/h ~ 2000m<sup>3</sup>/h  
380V, 50Hz, 1Ph*

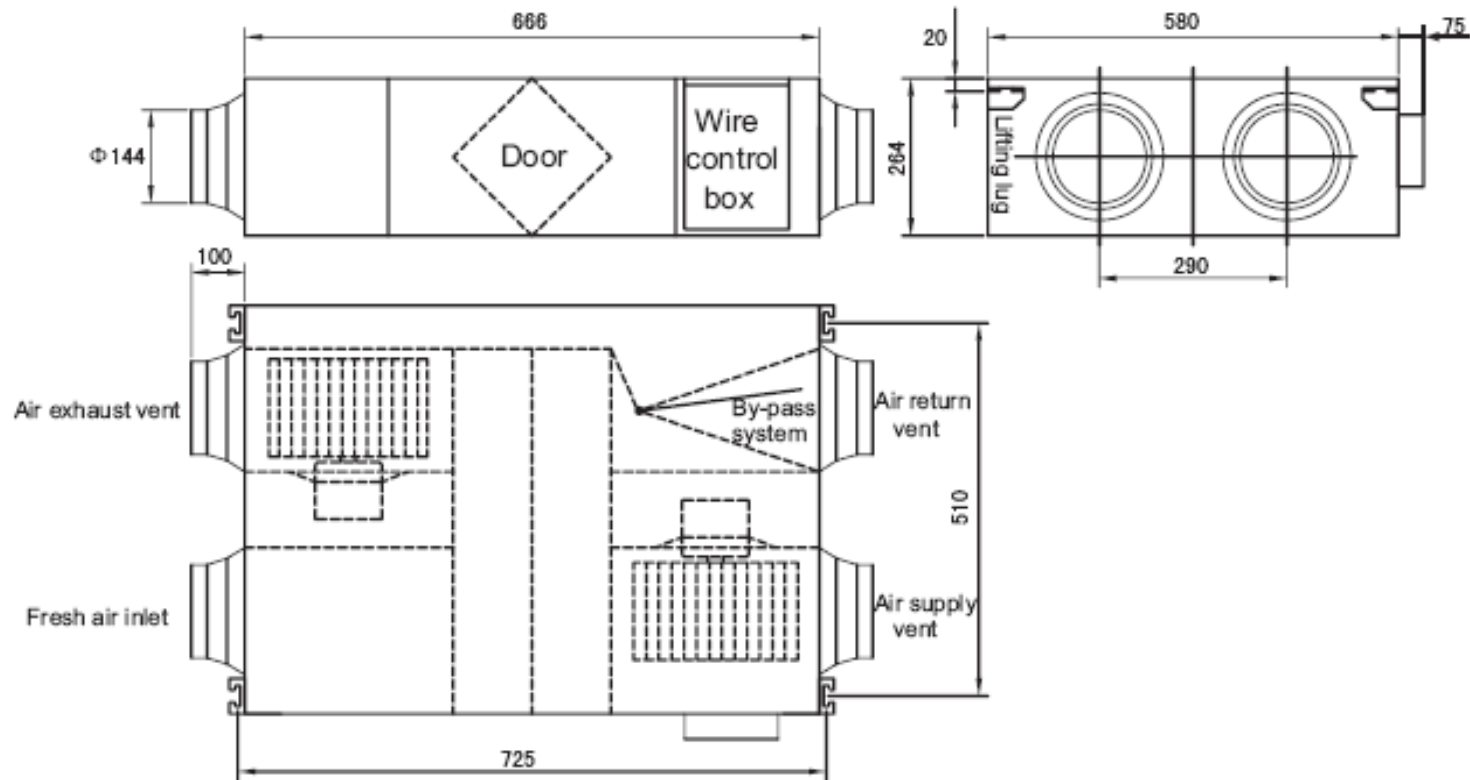
## 1. Specification

Model		CE-HRV-200	CE-HRV-300	CE-HRV-400	CE-HRV-500	CE-HRV-800
Air volume(m <sup>3</sup> /h)		200	300	400	500	800
Static pressure (Pa)		75	75	80	80	100
Cooling	Temp. efficiency (%)	60	60	60	60	60
	Enthalpy efficiency(%)	50	50	50	50	50
Heating	Temp. efficiency (%)	65	65	65	70	70
	Enthalpy efficiency (%)	55	55	60	60	60
Power supply (V-ph-Hz)		220~240-1-50				
Motor	Type	Single Phase Asynchronous Motor				
	Power (W)	20	40	80	120	360
	Current (A)	0.5	0.56	1	1.2	2
Dimension (L*W*H) mm		666*580*264	744*599*270	744*804*270	824*904*270	1116*884*388
Net/Gross Weight(kg)		22/46	23/48	30/57	35.5/65.5	57.5/91.5
Noise level dB(A)		27	30	32	35	39
Controller		KJR-27B/E				

Model		CE-HRV-1000	CE-HRV-1500	CE-HRV-2000
Air volume (m <sup>3</sup> /h)		1500	1500	2000
Static pressure (Pa)		150	160	170
Cooling	Temp. efficiency (%)	60	60	60
	Enthalpy efficiency (%)	50	50	50
Heating	Temp. efficiency (%)	70	70	70
	Enthalpy efficiency (%)	60	60	60
Power supply (V-ph-Hz)		220~240-1-50	380-3-50	
Motor	Type	Single Phase Asynchronous Motor	Three Phase Asynchronous Motor	
	Power (W)	360	900	1100
	Current (A)	2.4	3.2	3.6
Dimension (L*W*H) mm		1116*1134*388	1500*1200*540	1500*1200*540
Net/Gross Weight(kg)		59/95	160/200	175/215
Noise level dB(A)		40	51	53
Controller		KJR-27B/E		

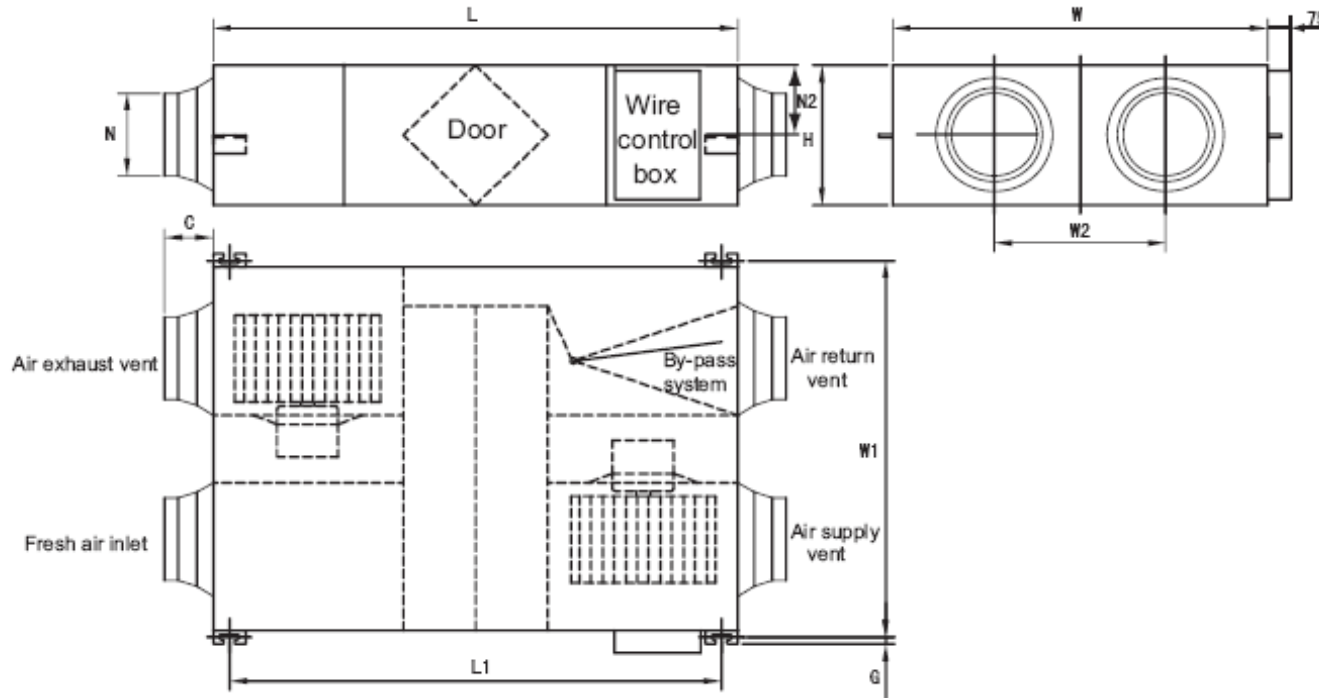
## 2.Dimension

- CE-HRV-200



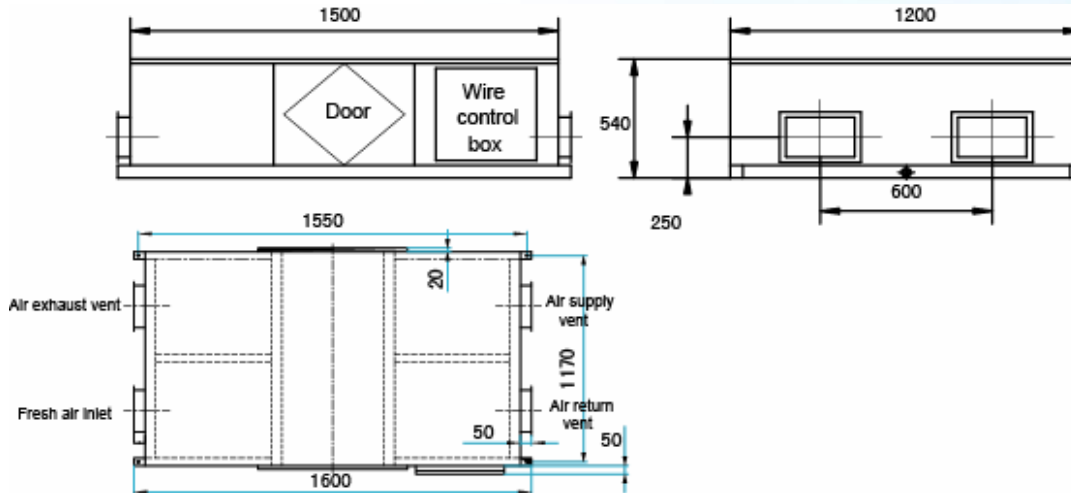


• *CE-HRV-300~1000*

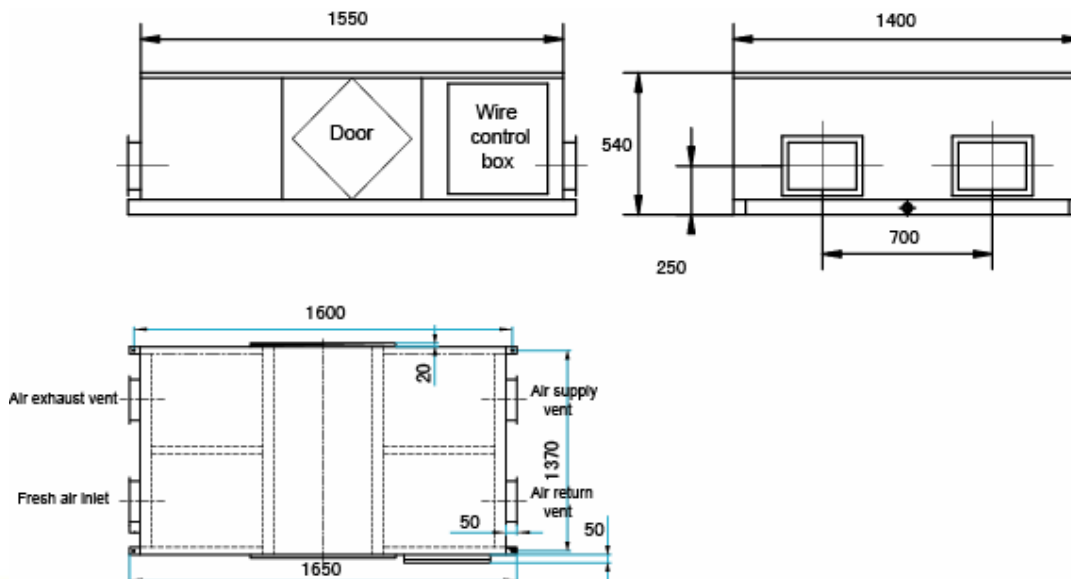


Model	L	L1	W	W1	W2	H	C	G	N	N2
HRV-300	744	675	599	657	315	270	100	19	Φ 144	111
HRV-400	744	675	804	862	480	270	100	19	Φ 144	111
HRV-500	824	754	904	960	500	270	107	19	Φ 194	111
HRV-800	1116	1045	884	940	428	388	85	19	Φ 242	170
HRV-1000	1116	1045	1134	1190	678	388	85	19	Φ 242	170

- CE-HRV-1500**



- CE-HRV-2000**



***Thank you!***